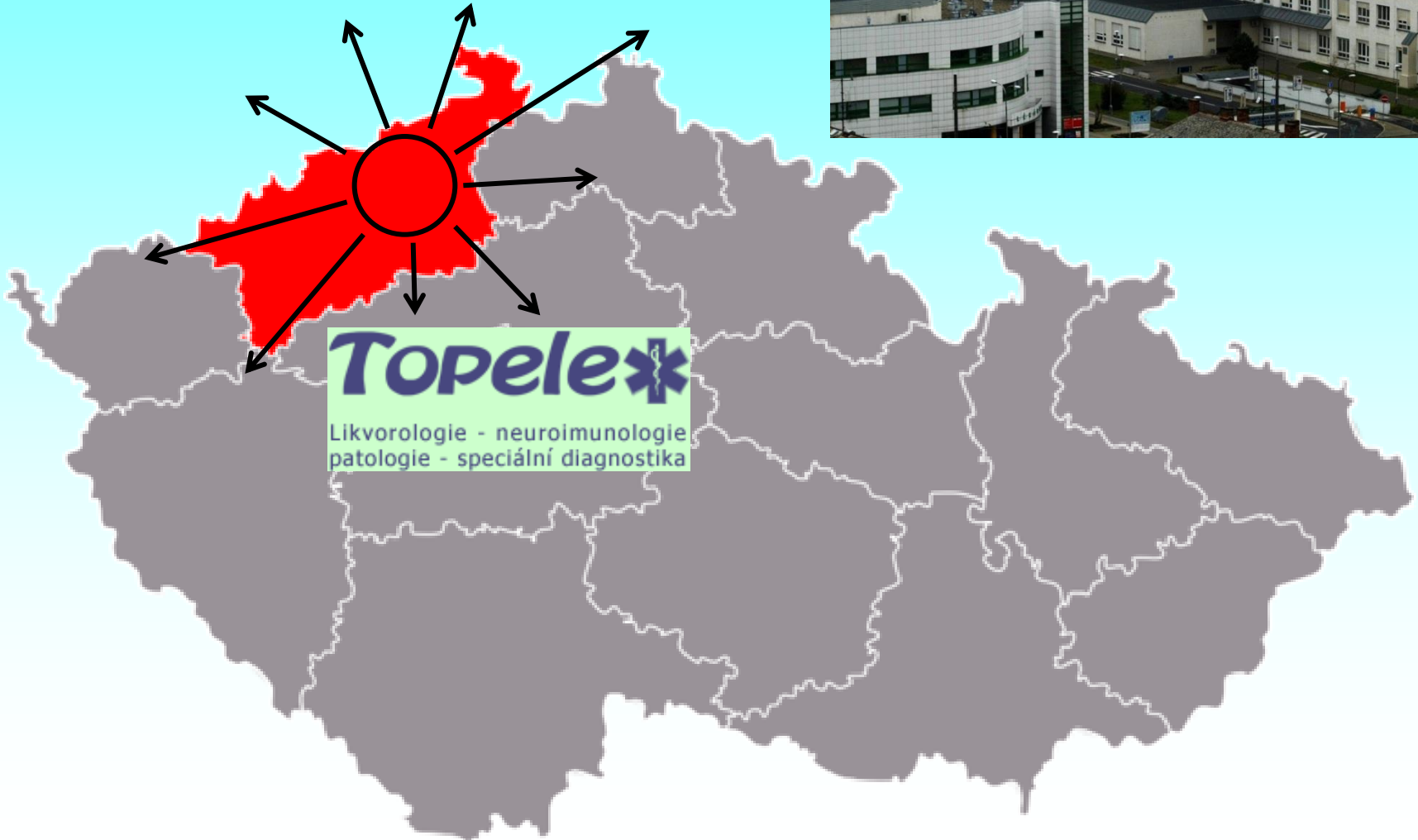
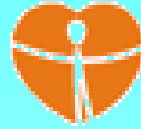




# Krajská zdravotní, a.s.

- Masarykova nemocnice  
v Ústí nad Labem, o.z.

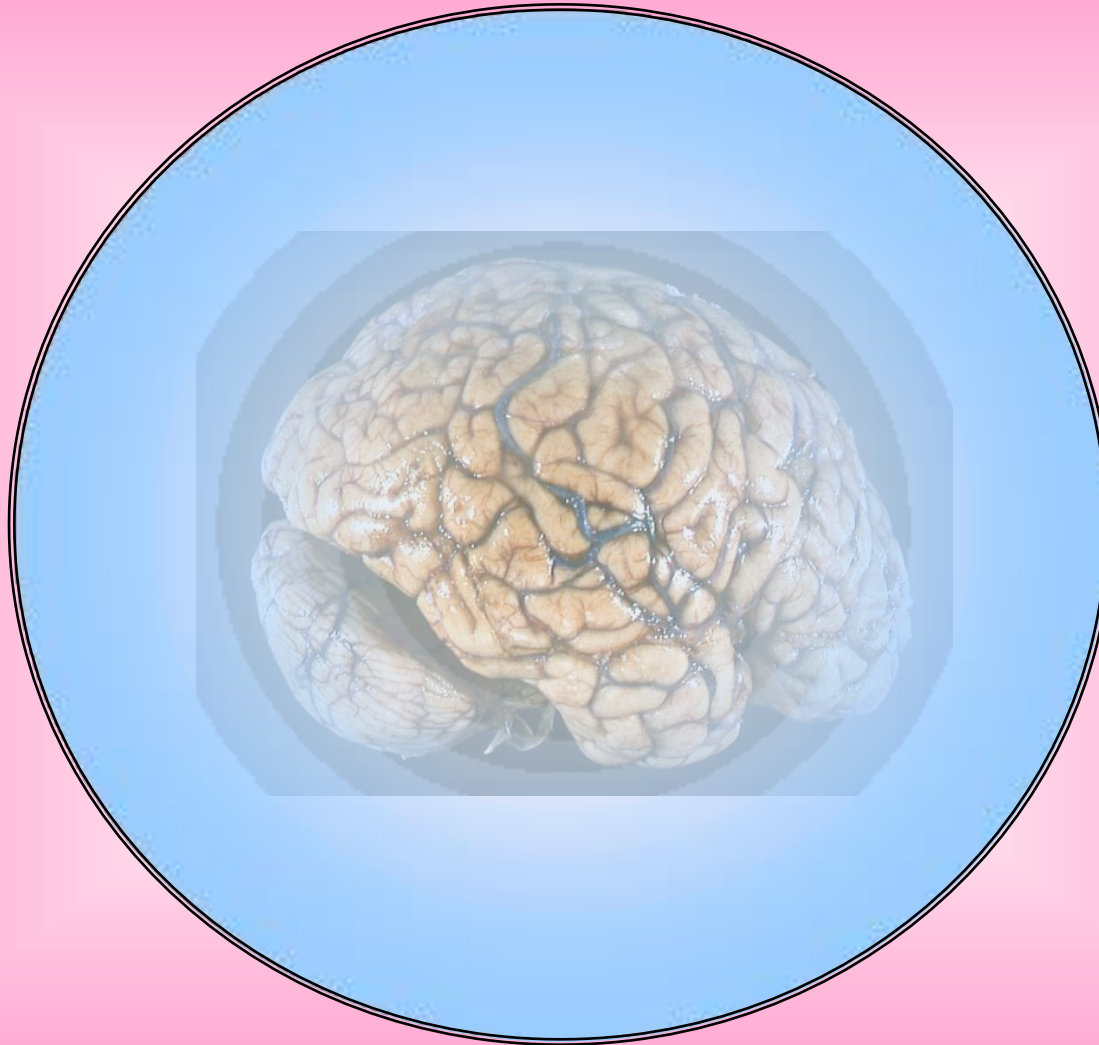


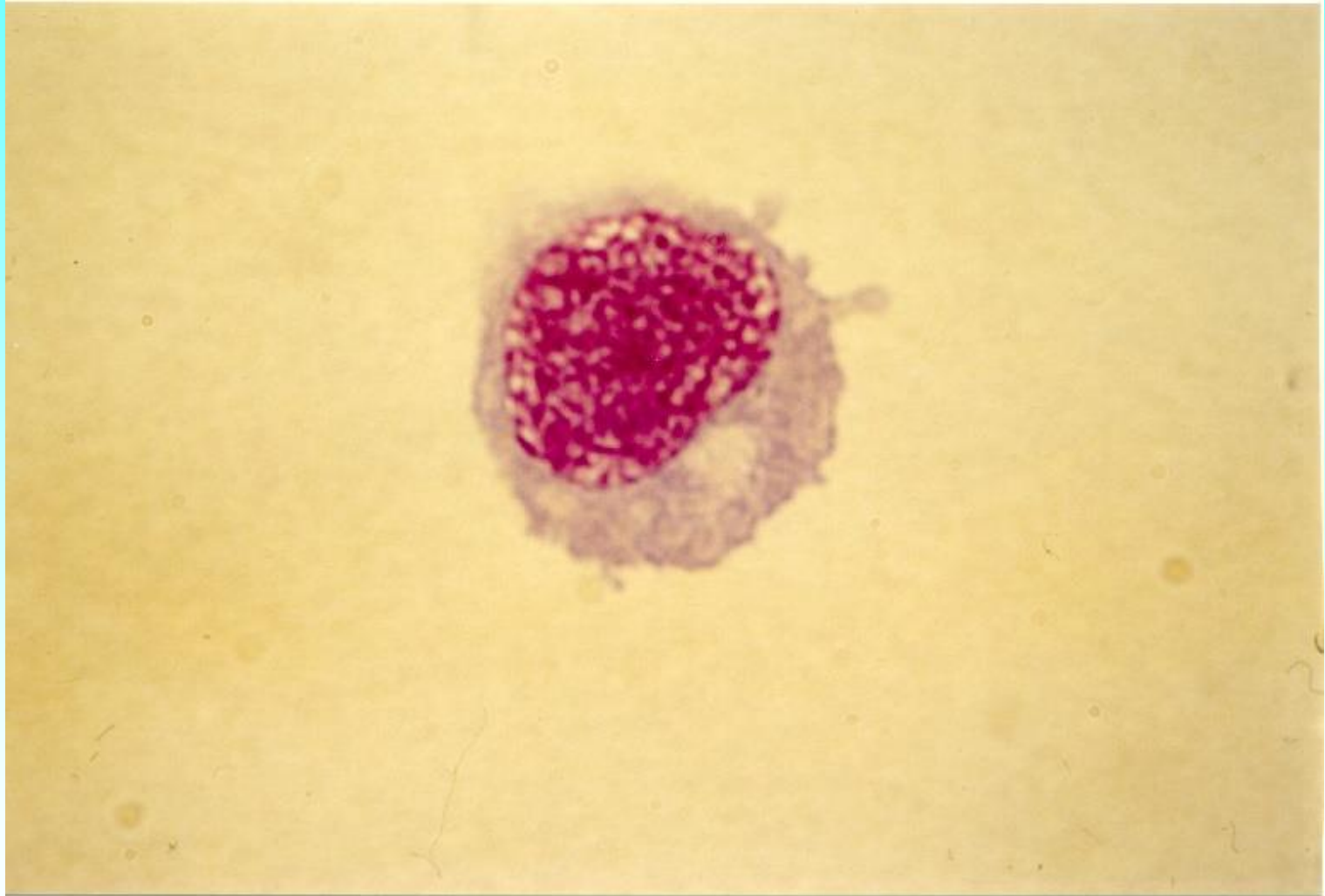
**XII. Sympóziium pro laboratorní a klinické aspekty likvorologie,  
neuroimunologie a analýzy extravaskulárních tekutin**

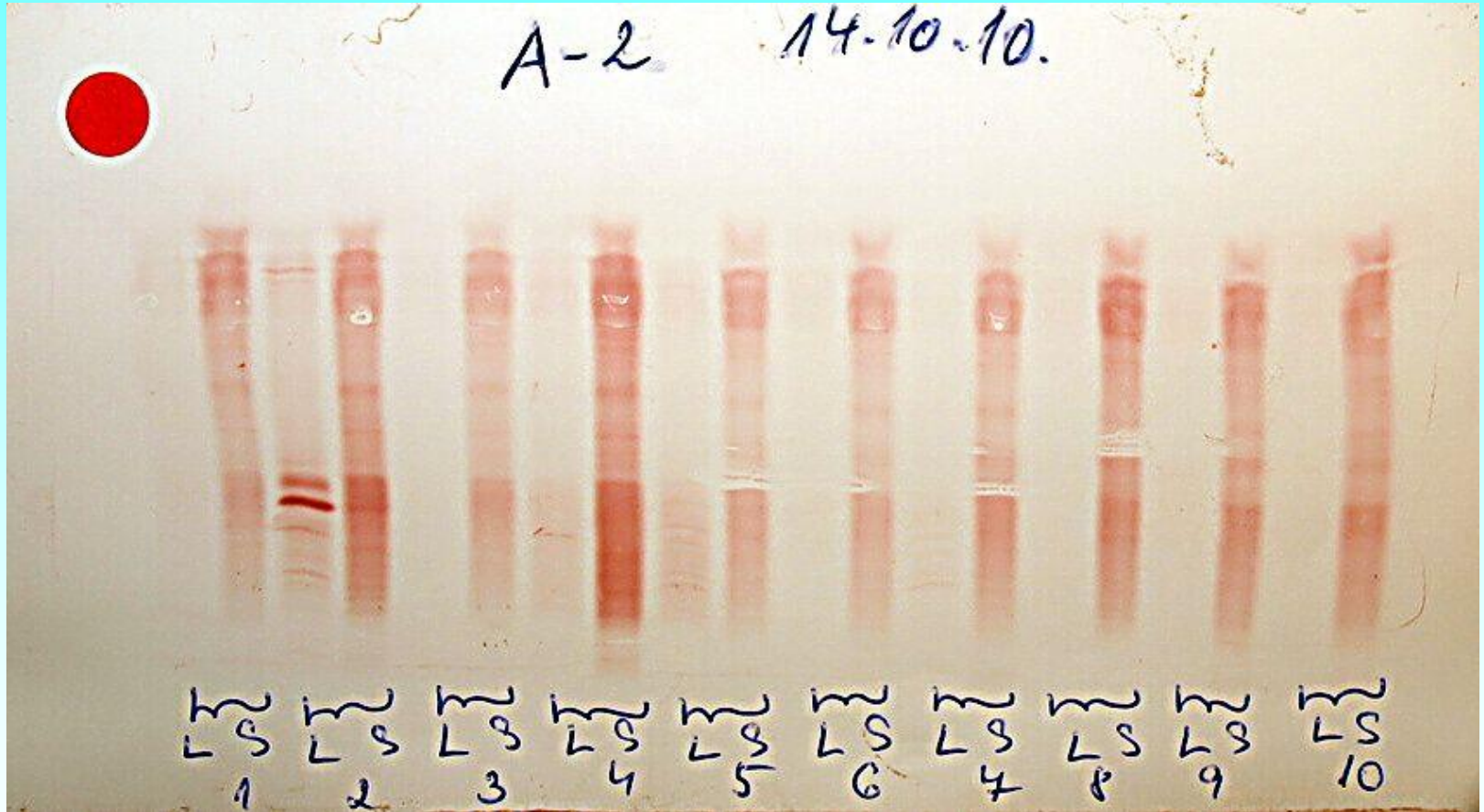
**Praha, Martinický palác; 12.6.2018**

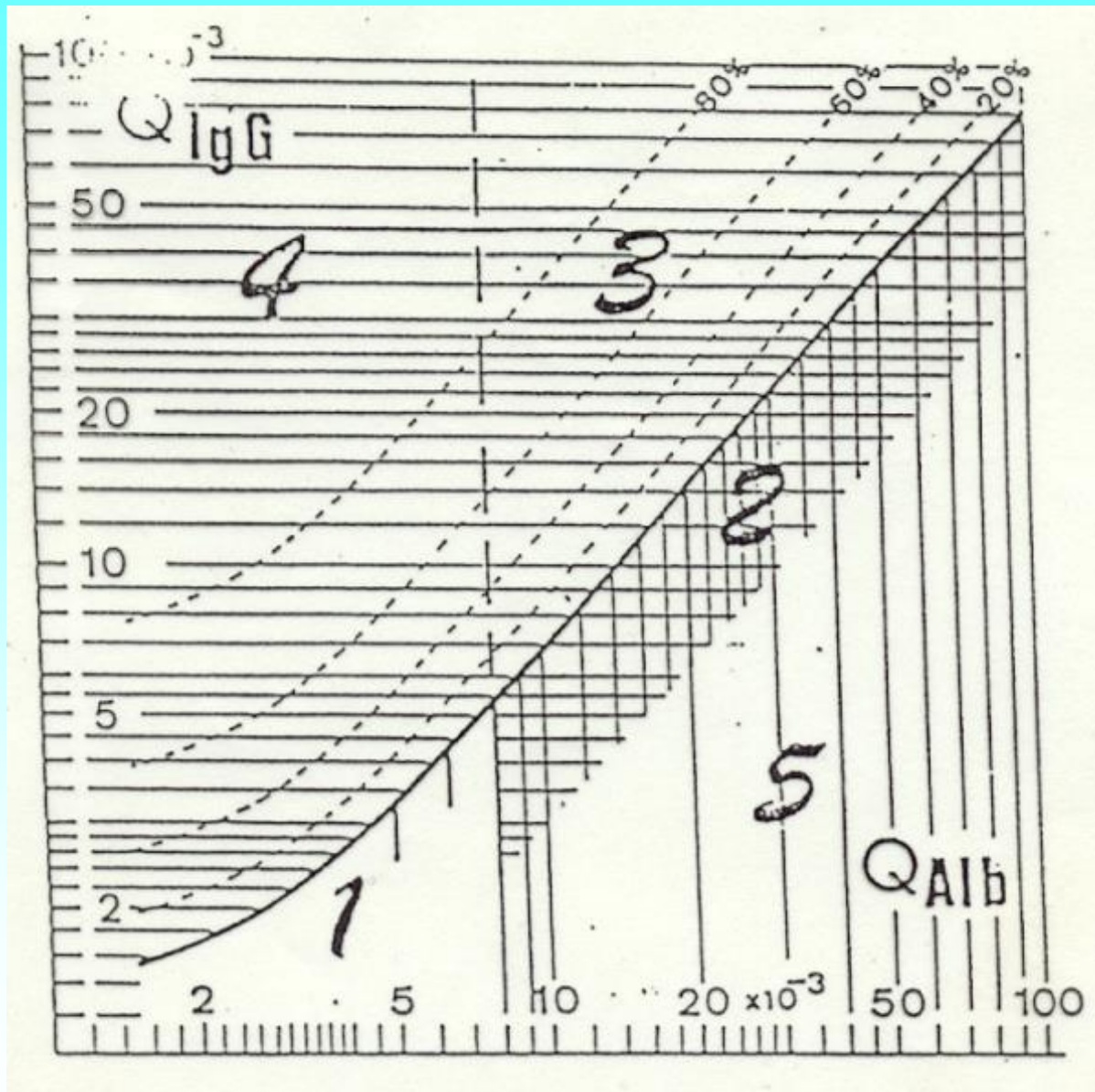
**Kvantitativní versus kvalitativní detekce  
protilátkové odpovědi v likvoru**

**P. Kelbich, O. Sobek**

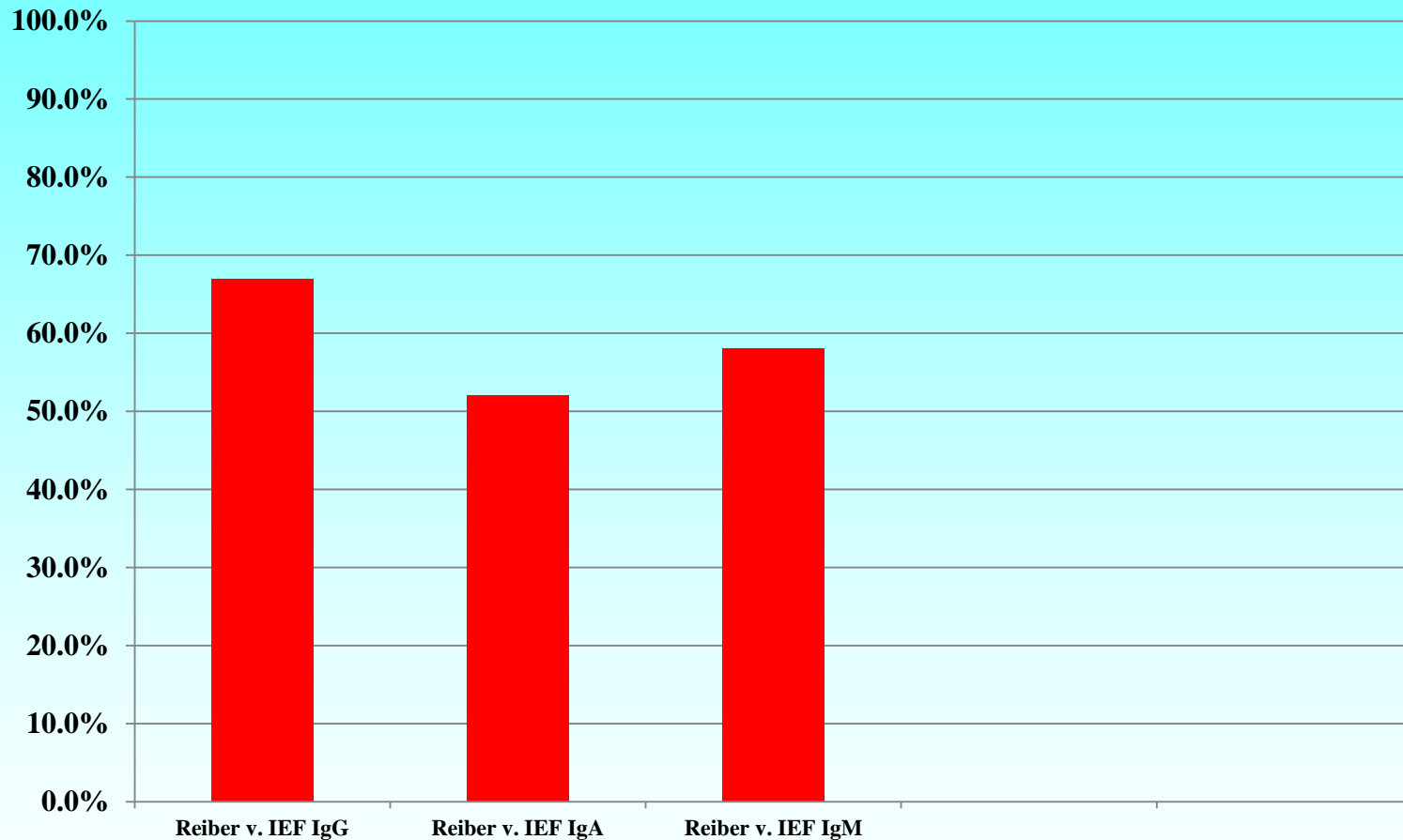








## SHODA

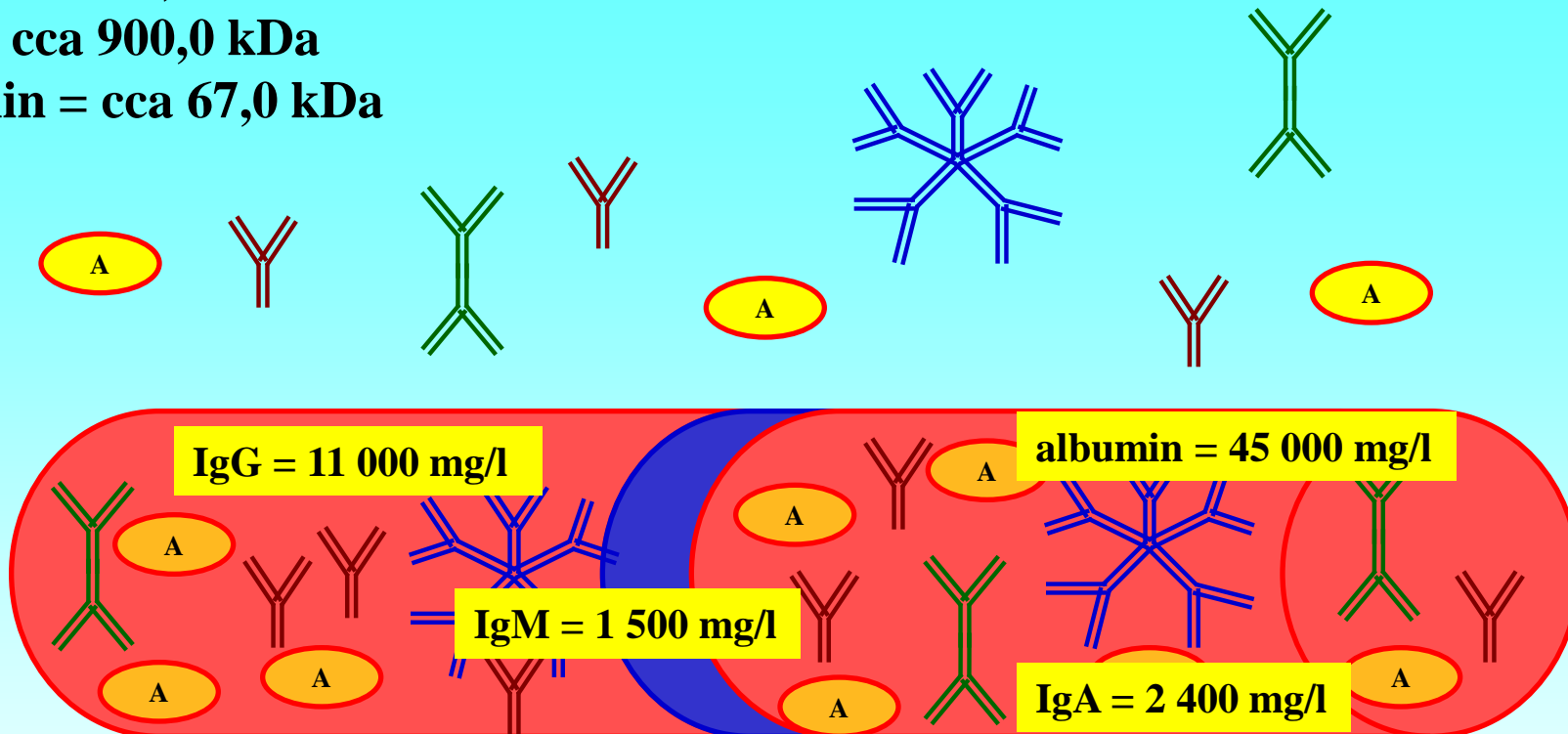


**IgG = cca 150,0 kDa**

**IgA = cca 400,0 kDa**

**IgM = cca 900,0 kDa**

**albumin = cca 67,0 kDa**

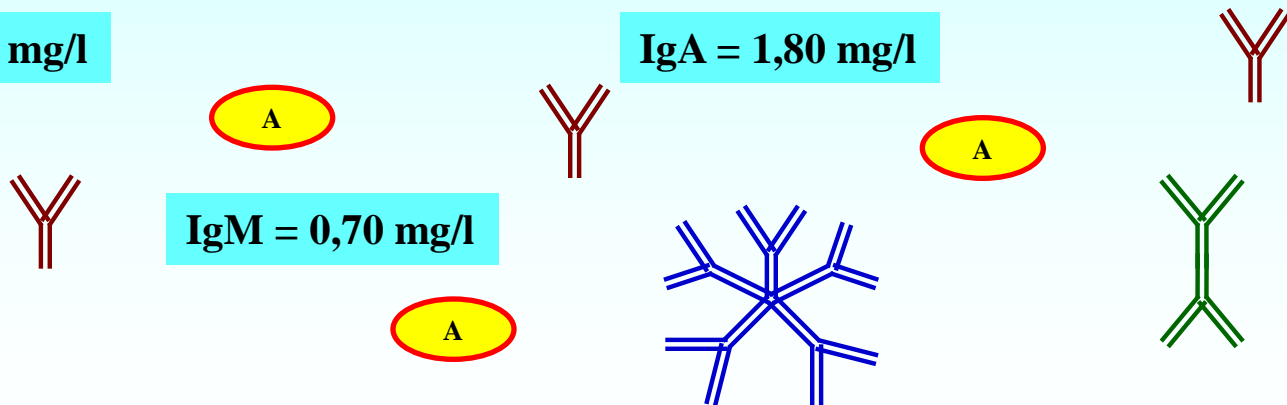


**IgG = 26 mg/l**

**IgA = 1,80 mg/l**

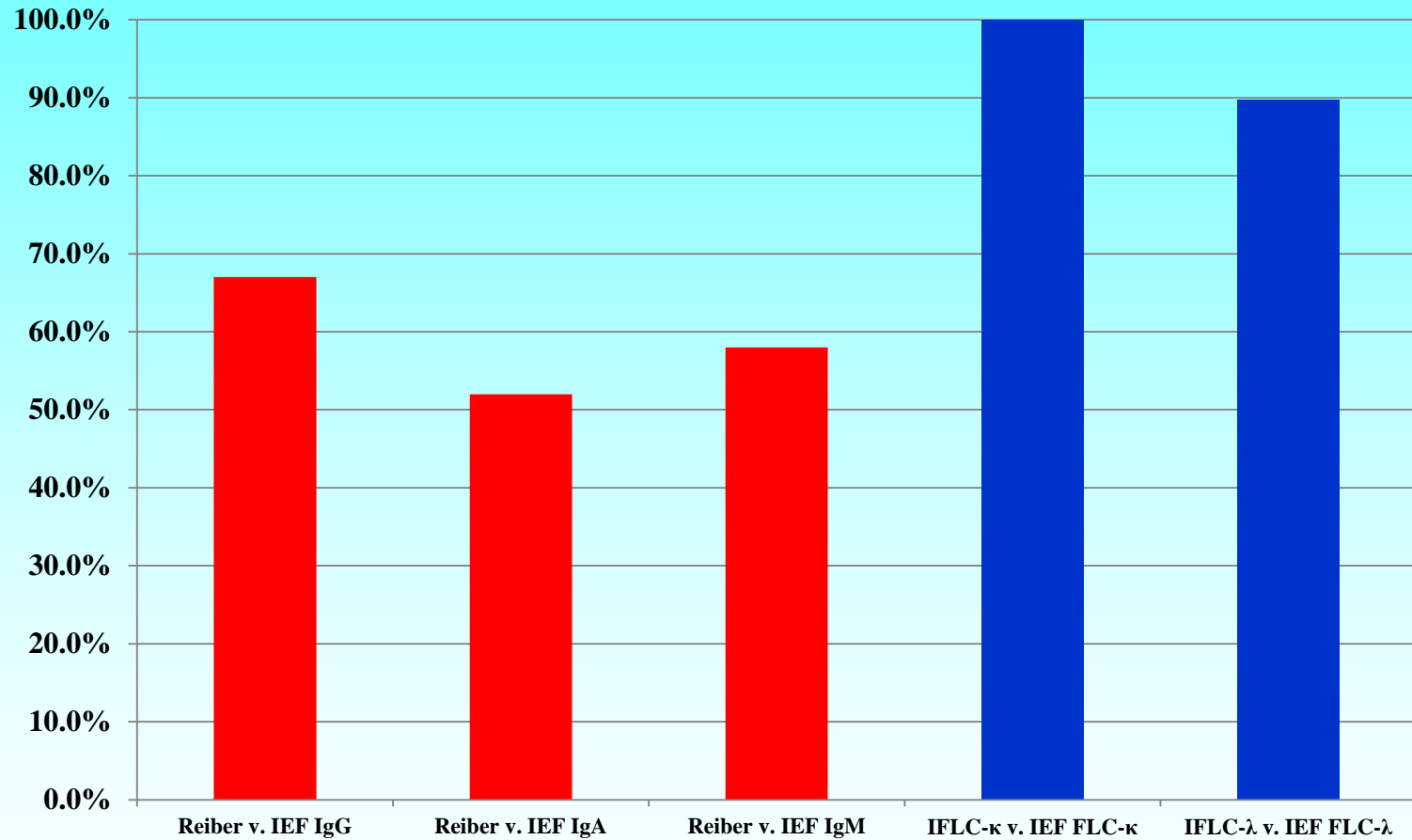
**IgM = 0,70 mg/l**

**albumin = 210,0 mg/l**





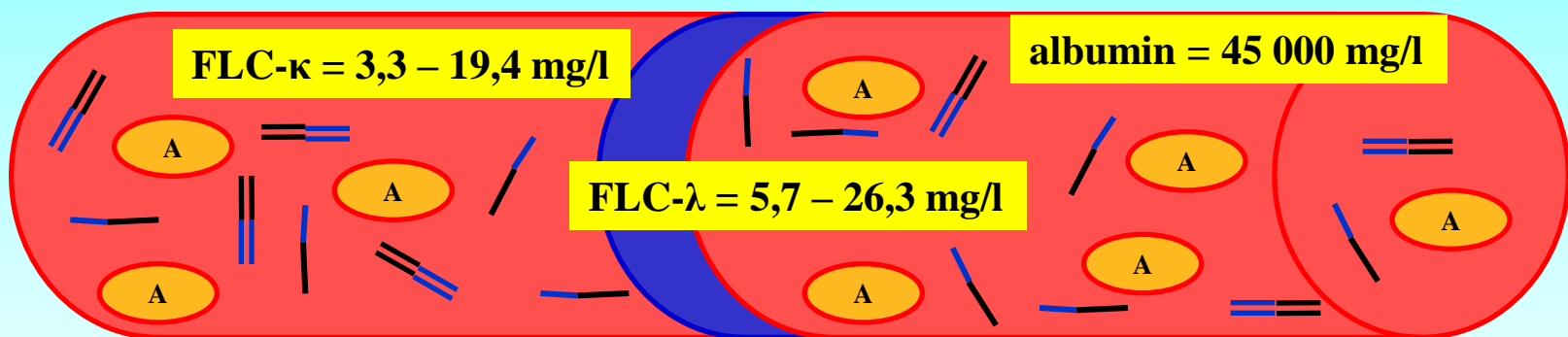
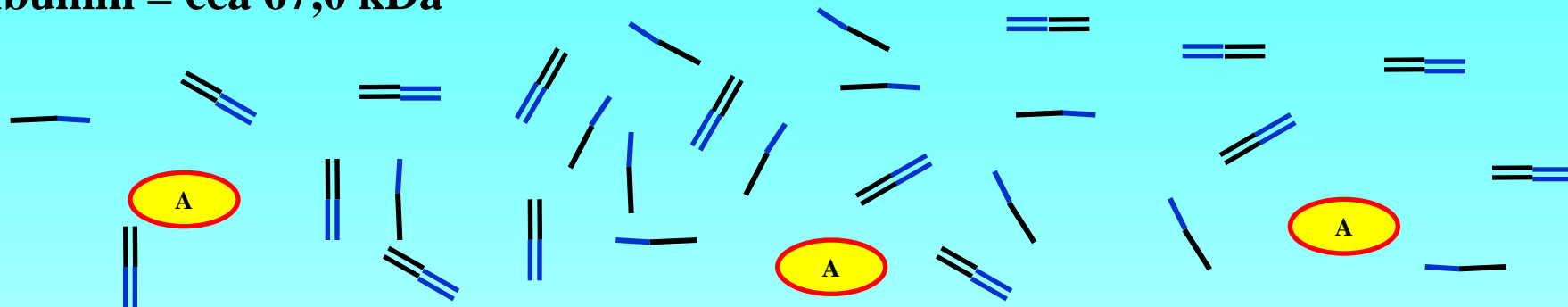
## SHODA



**FLC-κ = cca 22,5 kDa**

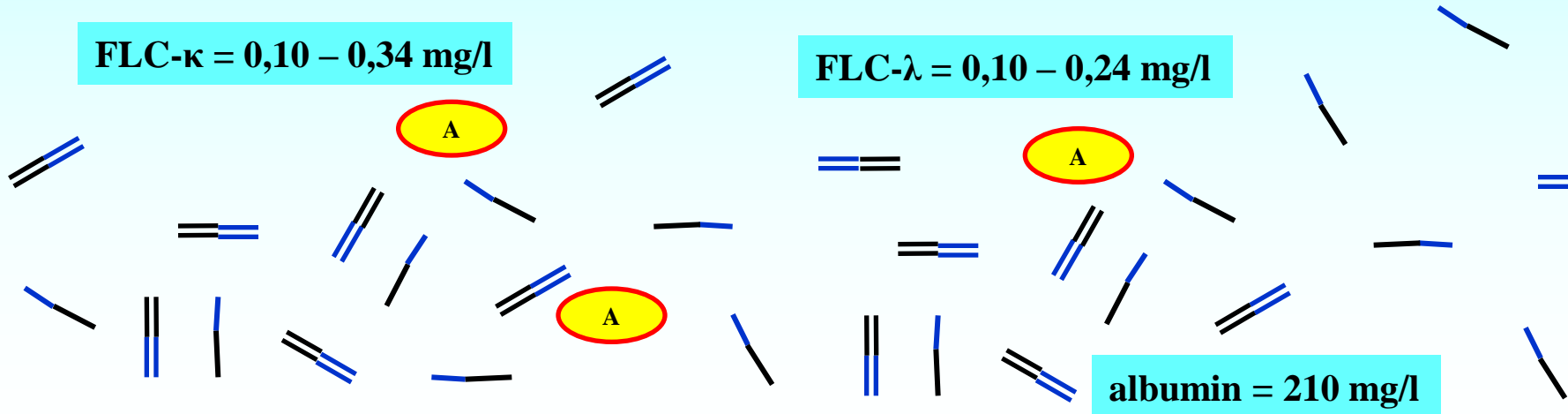
**FLC-λ = cca 45,0 kDa**

**albumin = cca 67,0 kDa**



**FLC-κ = 0,10 – 0,34 mg/l**

**FLC-λ = 0,10 – 0,24 mg/l**



**albumin = 210 mg/l**







Děkuji za pozornost